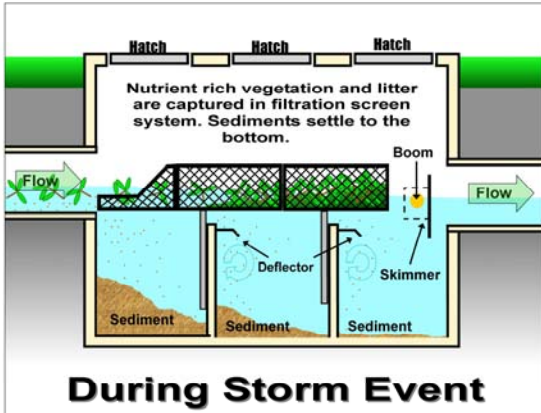
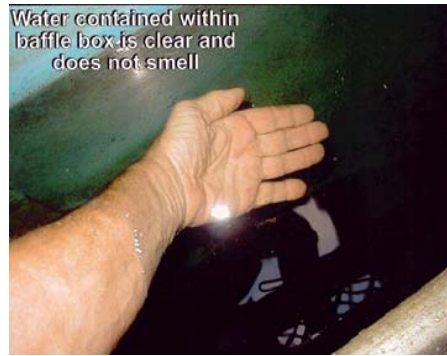


Nutrient Separating Baffle Box

“Separated from the Competition”



The Nutrient Separating Baffle Box Separates Organics (Debris) and Litter from the Standing Water.



Water is Clean and Clear



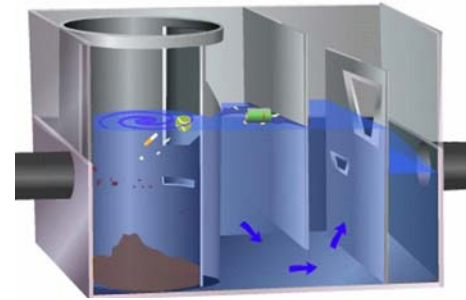
Pollutants captured in upper screen are allowed to dry out between storm events.

Water has clear appearance. No Leaching Taking Place.



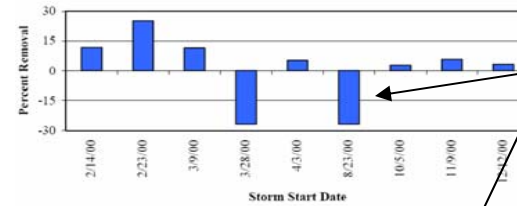
BIO CLEAN
ENVIRONMENTAL SERVICES, INC.

Other Systems



“When this debris is kept in a wet state, the nutrients will leach out and resuspend in the water column in a few days, becoming a source of nutrients pollution”.
(ASCE Monitoring Guidelines for Measuring Stormwater Gross Solids: Stormwater Magazine, Nov/Dec 2005, page 10)

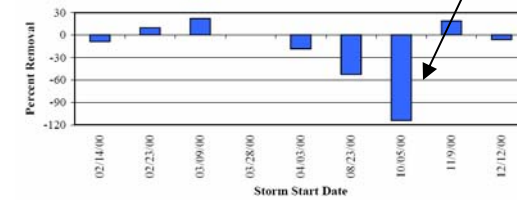
Figure 8. Percent Removal of TP.



Test results from a vendors website proves that these systems are a source of nutrient pollution.

A stormwater BMP being a source of pollution doesn't make sense.

Figure 10. Percent Removal of TN.

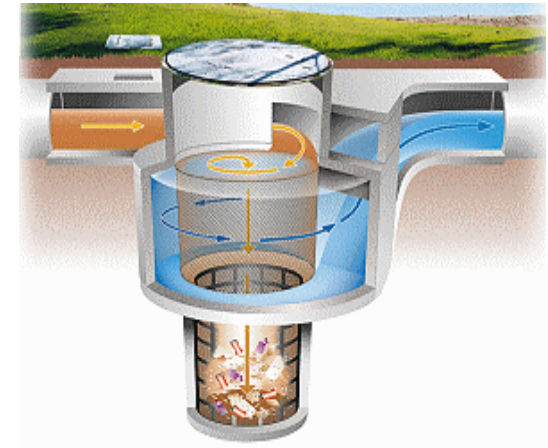
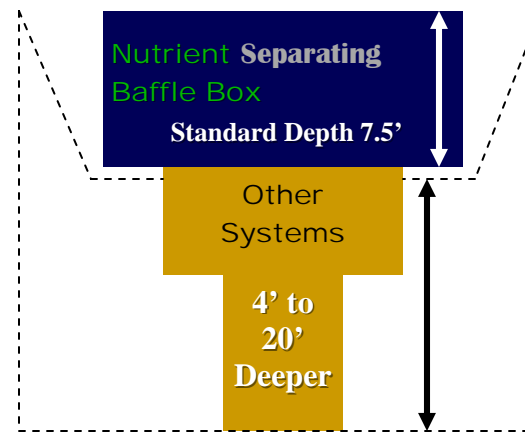


All pollutants captured in these systems are allowed to float in the standing water. This allows organics to leach their nutrients into the water and allows litter to decompose in the water. This leads to increased levels of nutrients, septic conditions and overall decreased water quality.





Shallow Profile



Separating these pollutants cuts down on maintenance costs and gives maintenance crews a two stage cleaning option.



Organics and trash decomposing in the Water Held within this System.

This leads to septic conditions. Dewatering of these pollutants also

This systems small footprint and shallow profile reduces excavation costs and cuts down on installation time.



High excavation and installation costs



BIO CLEAN ENVIRONMENTAL SERVICES, INC.

P O Box 869, Oceanside, CA 92049
 (760) 433-7640 • Fax (760) 433-3176
www.biocleanenvironmental.net