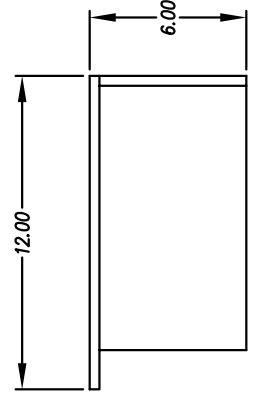
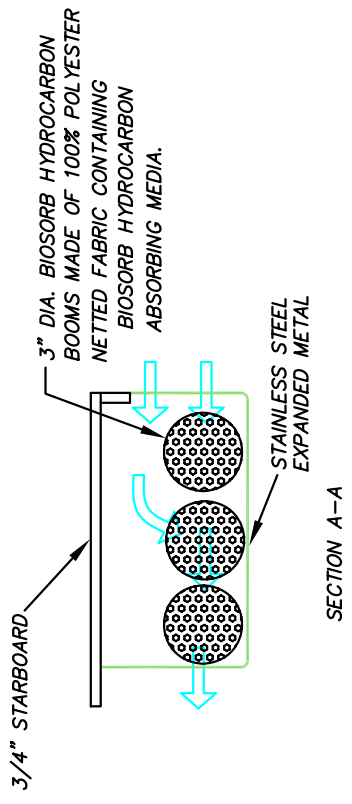
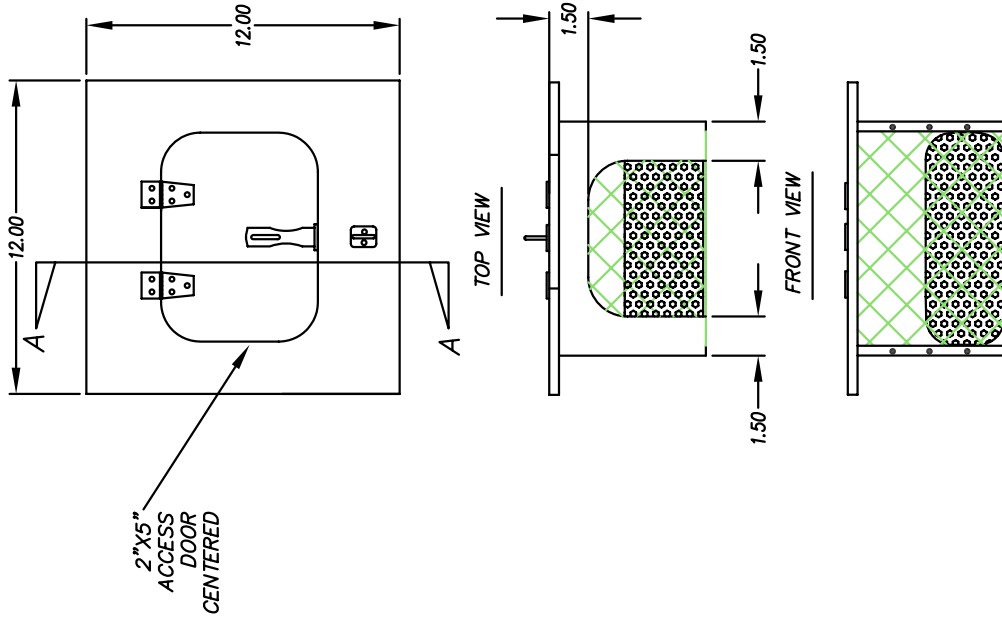


BIO CLEAN FLUME FILTER – 12 INCH – MEDIA TYPE



SIDE VIEW

TREATMENT FLOW RATE = .26 CFS

TREATMENT FLOW RATE = .26 CFS PER LINEAR FOOT FLOW RATE ASSUMES 50% BLOCKAGE

REAR VIEW

FLOW RATE .26 CFS PER LINEAR FOOT

5 YEAR MANUFACTURERS WARRANTY
PATENTED
 ALL FILTER SCREENS ARE STAINLESS STEEL

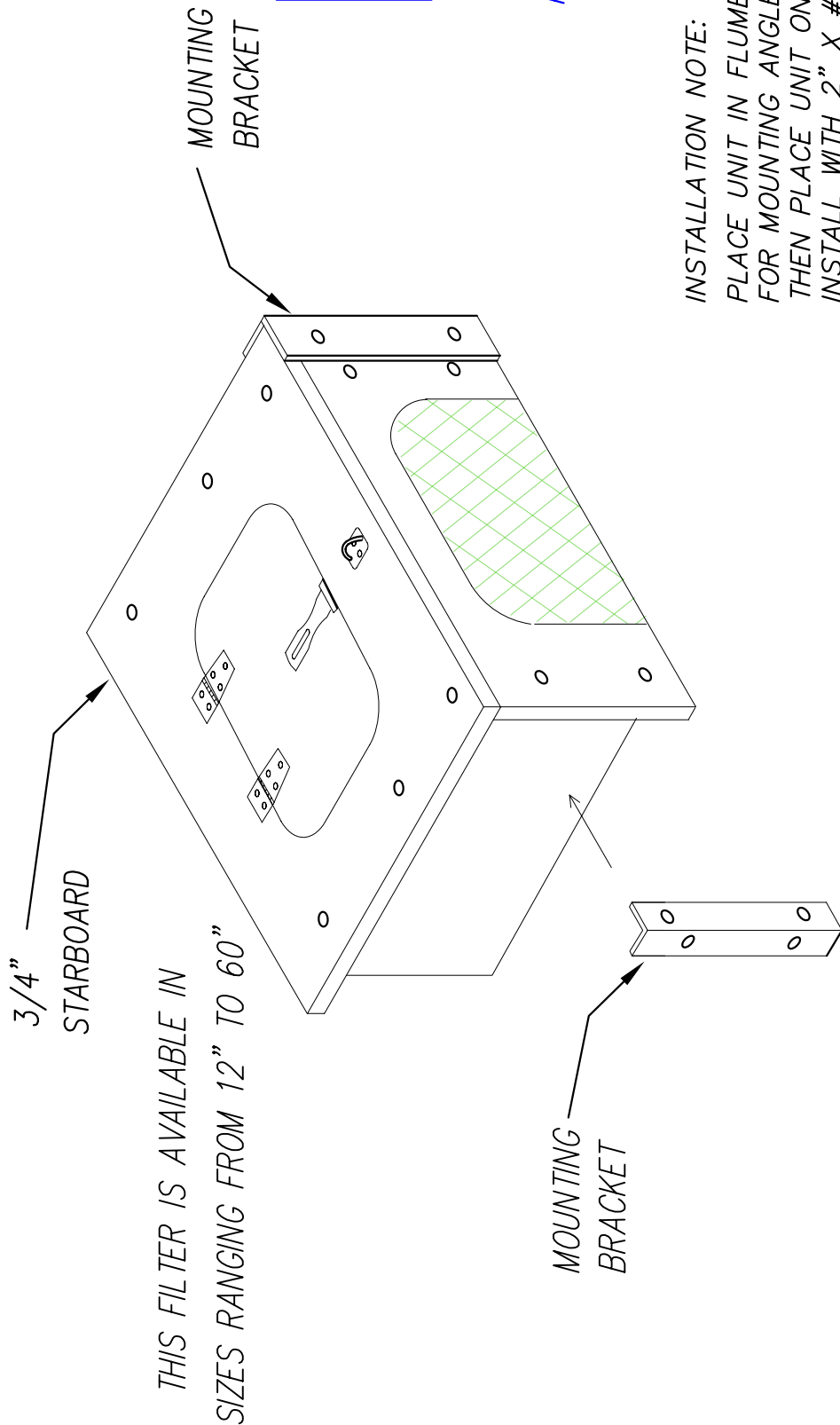
P 760-433-7640 F 760-433-3176
 EMAIL: info@biocleanenvironmental.net



SIZE	FSCM NO.	DWG NO.	REV
		BIO CLEAN FLUME FILTER 12" – MEDIA TYPE	
SCALE	N. T. S.	SHEET	1 OF 2

THIS FILTER IS AVAILABLE IN SIZES RANGING FROM 12" TO 60"

BIO CLEAN FLUME FILTER – 12 INCH – MEDIA TYPE



THIS FILTER IS AVAILABLE IN SIZES RANGING FROM 12" TO 60"

TREATMENT FLOW RATE = .26 CFS

TREATMENT FLOW RATE = .26 CFS PER LINEAR FOOT FLOW RATE ASSUMES 50% BLOCKAGE

INSTALLATION NOTE:
PLACE UNIT IN FLUME AND MARK CONCRETE FOR MOUNTING ANGLES. INSTALL ANGLES, THEN PLACE UNIT ON MOUNTING ANGLES AND INSTALL WITH 2" X #8 SCREWS.

THE BIOSORB MATERIAL IS MADE OF A PROPRIETARY POLYMER BASED BEADS. THE MATERIAL IS USUALLY CONTAINED WITHIN BOOMS OR POUCHES. THE BOOMS AND POUCHES ARE MADE OF 100% POLYESTER NETTED FABRIC WITH SIEVE OPENINGS 1mm, OPEN AREA RATIO IS APPROXIMATELY 67%. THE BIOSORB AND NETTING ARE OF SUFFICIENT STRENGTH TO SUPPORT WATER, SEDIMENT, AND DEBRIS LOADS WHEN THE MEDIA IS AT MAXIMUM ABSORPTION CAPACITY, WITH NO SLIPPAGE, BREAKING, OR TEARING. THE BIOSORB HAS BEEN TESTED THROUGH RIGOROUS FLOW AND LOADING CONDITIONS. THE BIOSORB IS DESIGNED TO CAPTURE HIGH LEVELS OF HYDROCARBONS INCLUDING BUT NOT LIMITED TO OILS AND GREASE, GASOLINE, DIESEL, AND PAHS. THE GRANULE NATURE OF THE MATERIAL, WITH APPROXIMATELY 2000MM SIZED GRANULES ALSO HAS THE PHYSICAL ABILITY TO BLOCK AND FILTER TRASH AND LITTER, GRASS AND FOLIAGE, AND SEDIMENTS.

P 760-433-7640 F 760-433-3176
EMAIL: info@biocleanenvironmental.net

SIZE	FSCM NO.	DWG NO.	BIO CLEAN FLUME	REV
SCALE	N. T. S.	FILTER 12" – MEDIA TYPE		
			SHEET	2 OF 2